



Crabtree, Rohrbaugh & Associates

# WYOMISSING AREA SCHOOL DISTRICT

SCHEMATIC DESIGN PRESENTATION

OCTOBER 12, 2020

# SCHEMATIC DESIGN PRESENTATION

- Study Option Overview
- Wyomissing Hills K-4 Educational Center
  - Site Plan Review
  - Floor Plan Review
  - Proposed Additions
- Wyomissing Area Jr/Sr High School
  - Site Plan Review
  - Floor Plan Review
  - Proposed Additions
- Project Schedule
- Next Steps





## OPTION 4 :

### PROPOSED SCOPE OF WORK:

- Select renovations and additions to Wyomissing Hills Elementary Center
- Select renovations and additions to Wyomissing Area Jr/Sr High School
- Improvements to West Reading Elementary Center
- HVAC improvements to Fieldhouse facility



# EXISTING WYOMISSING HILLS K-4





# EXISTING WYOMISSING HILLS K-4



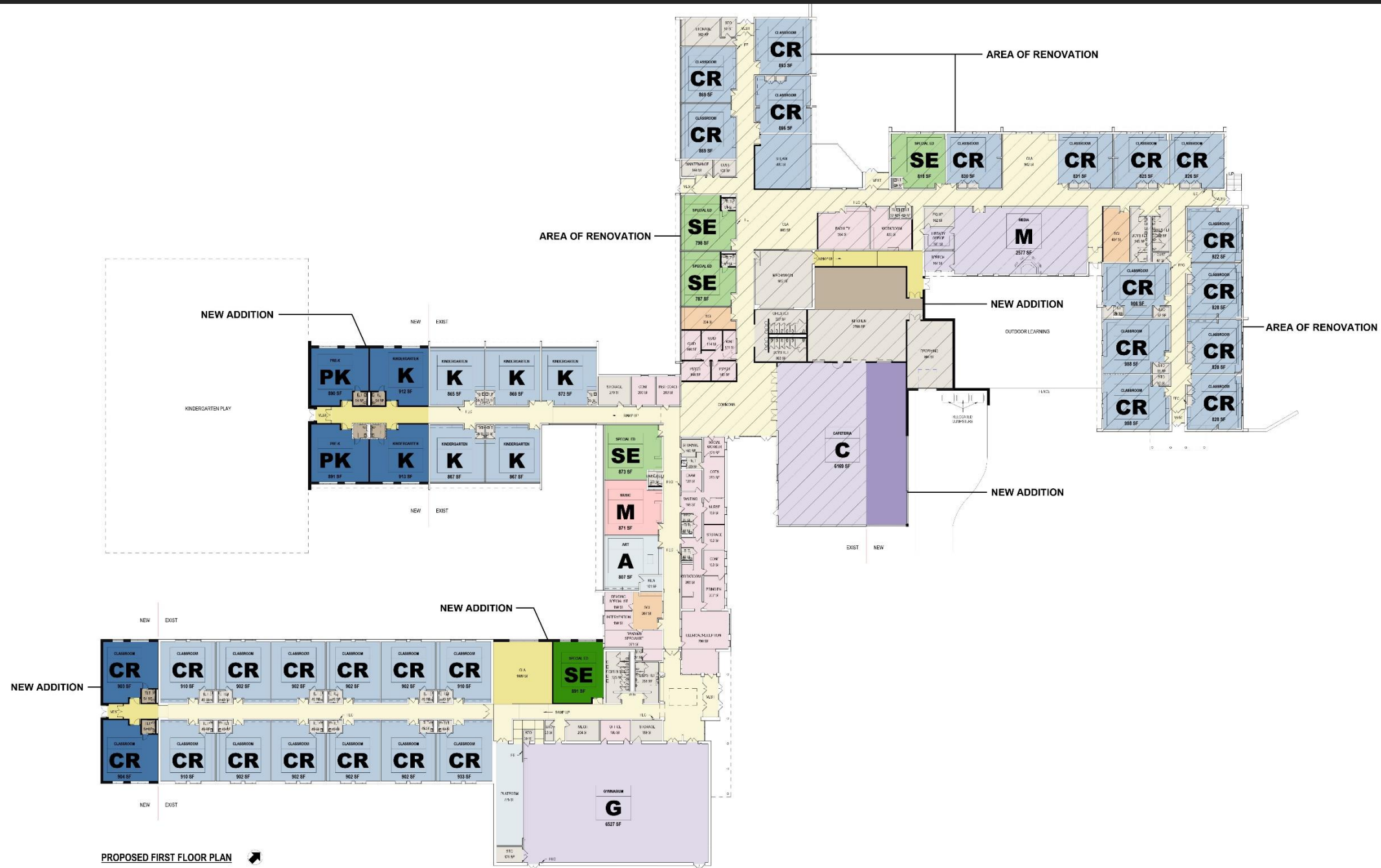


# PROPOSED WYOMISSING HILLS K-4





# PROPOSED WYOMISSING HILLS K-4





# PROPOSED WYOMISSING HILLS K-4



# PROPOSED WYOMISSING HILLS K-4





# PROPOSED WYOMISSING HILLS K-4



# PROPOSED WYOMISSING HILLS K-4



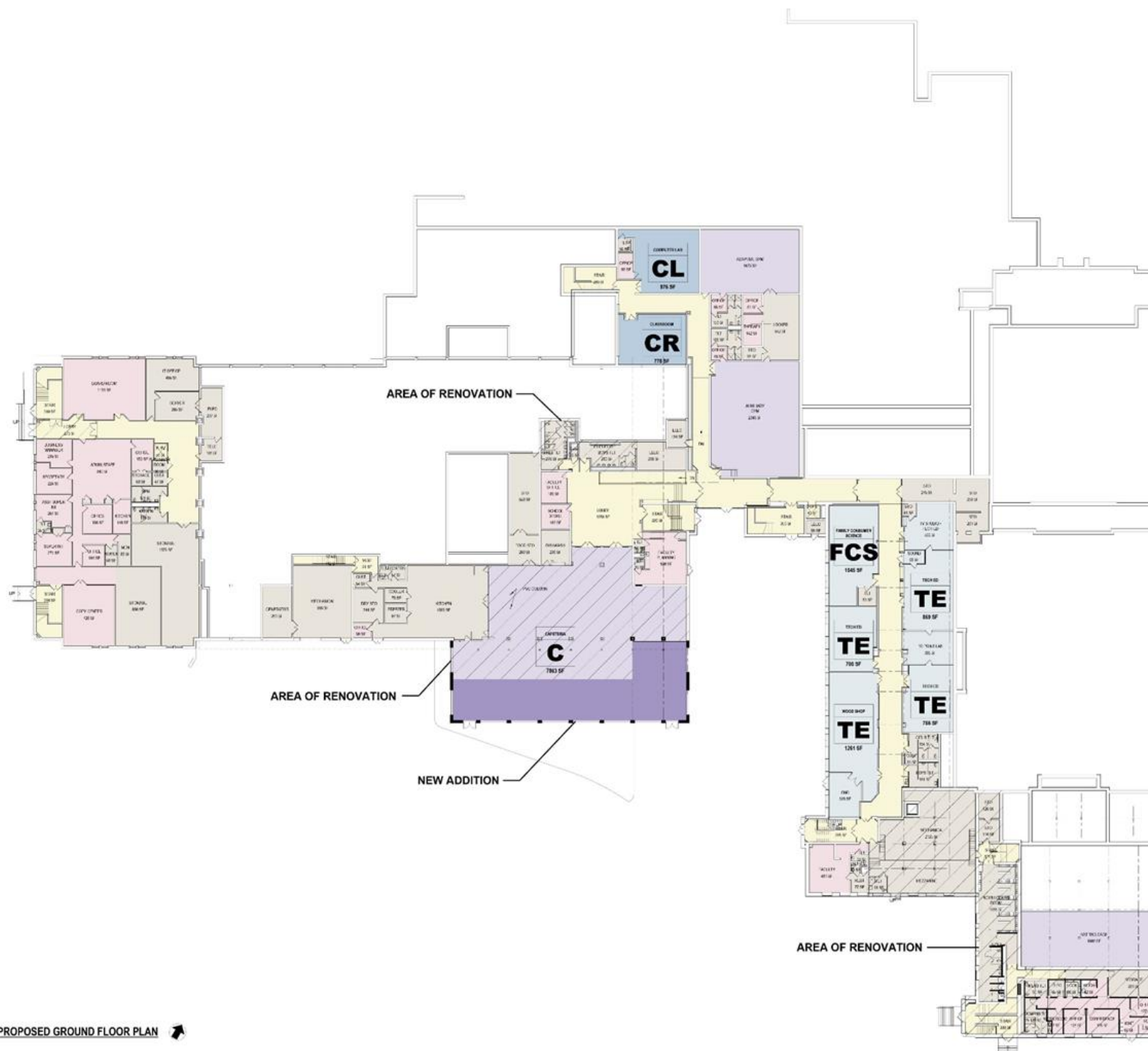


# PROPOSED WYOMISSING AREA JR/SR HIGH SCHOOL



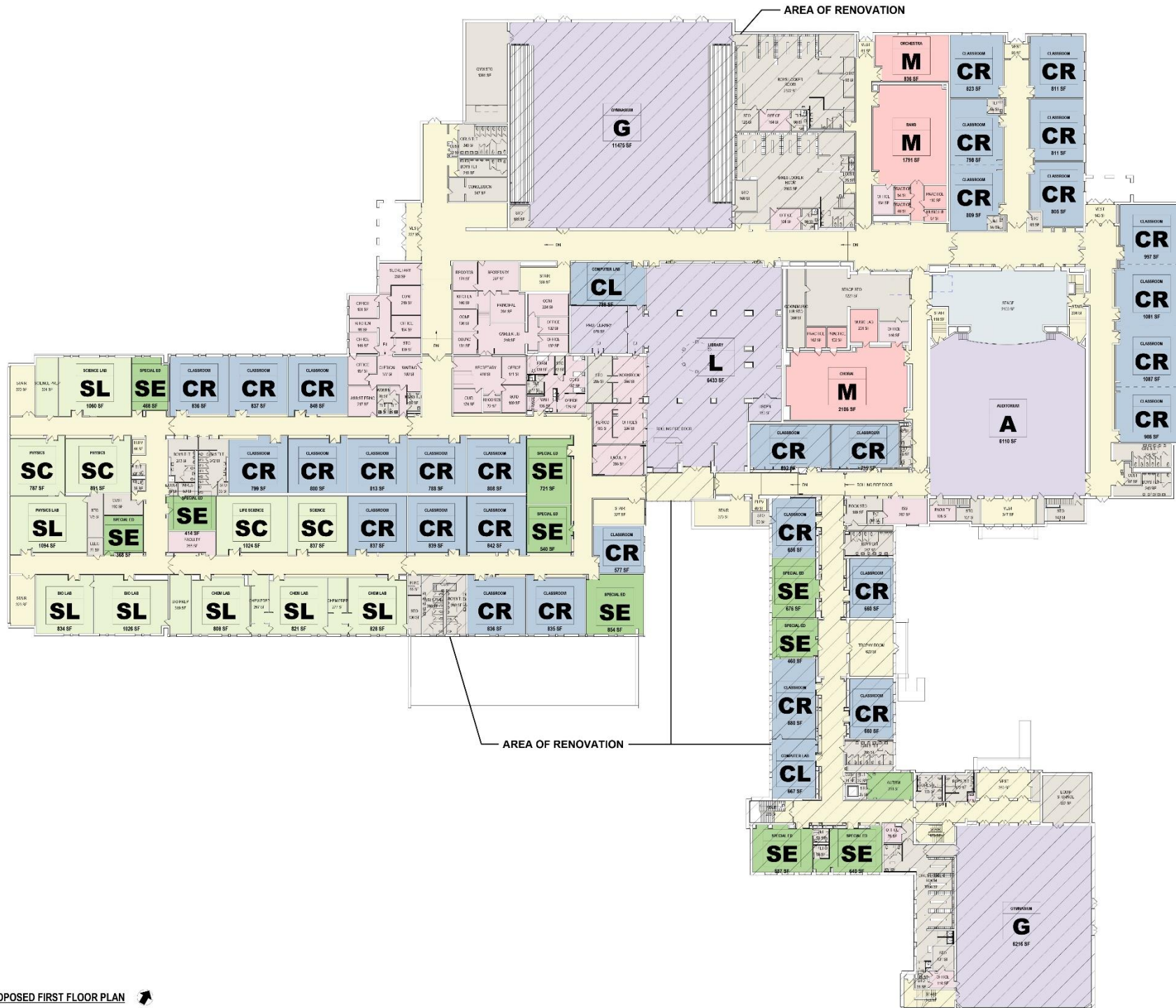


**PROPOSED GROUND FLOOR PLAN** 

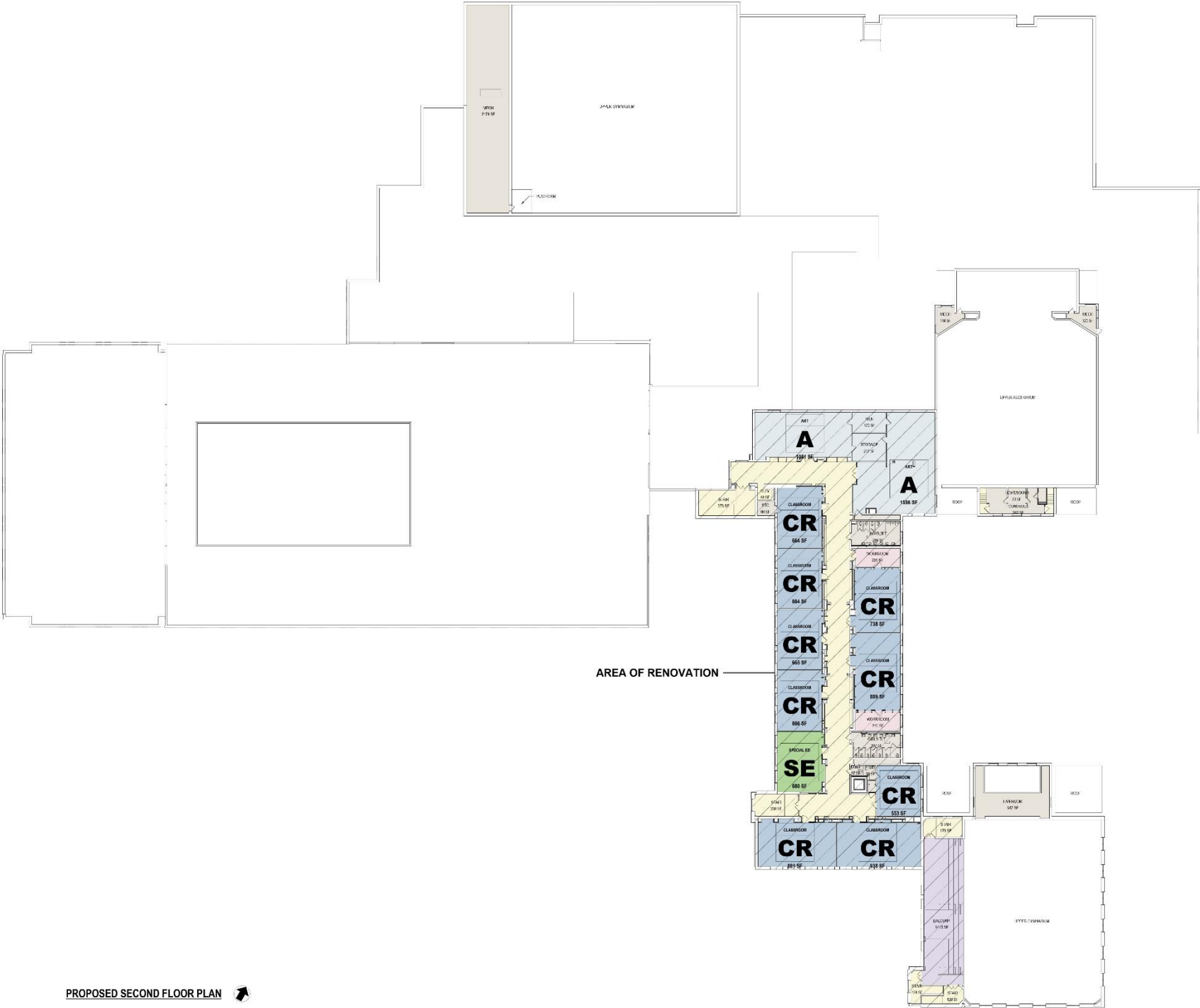




# PROPOSED WYOMISSING AREA JR/SR HIGH SCHOOL

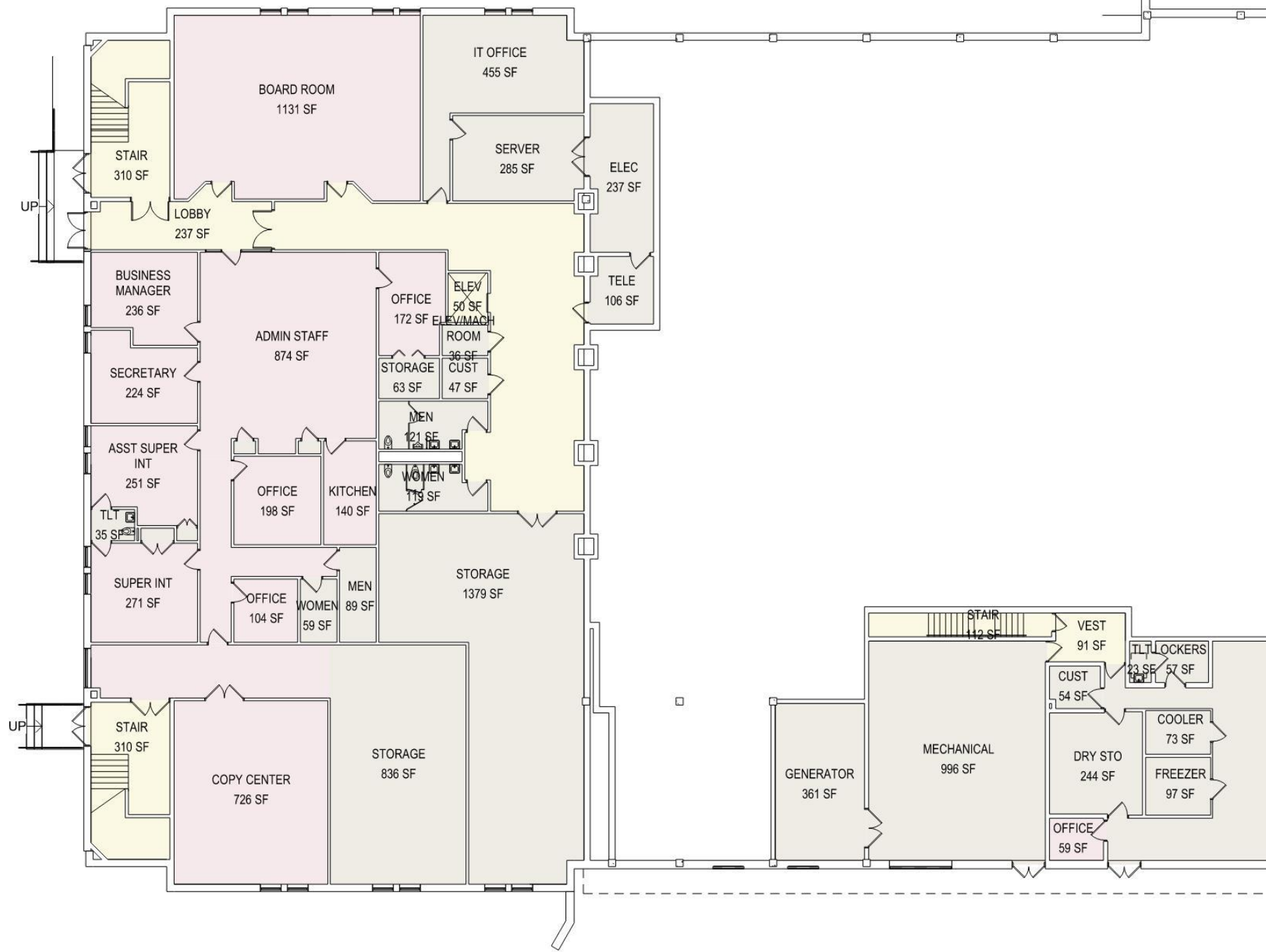


# PROPOSED WYOMISSING AREA JR/SR HIGH SCHOOL





# PROPOSED WYOMISSING AREA JR/SR HIGH SCHOOL



# PROPOSED WYOMISSING AREA JR/SR HIGH SCHOOL





# PROPOSED WYOMISSING AREA JR/SR HIGH SCHOOL





# PROPOSED WYOMISSING AREA JR/SR HIGH SCHOOL





# PROPOSED WYOMISSING AREA JR/SR HIGH SCHOOL



# PROPOSED WYOMISSING AREA JR/SR HIGH SCHOOL





# PROPOSED WYOMISSING AREA JR/SR HIGH SCHOOL



# PROPOSED WYOMISSING AREA JR/SR HIGH SCHOOL



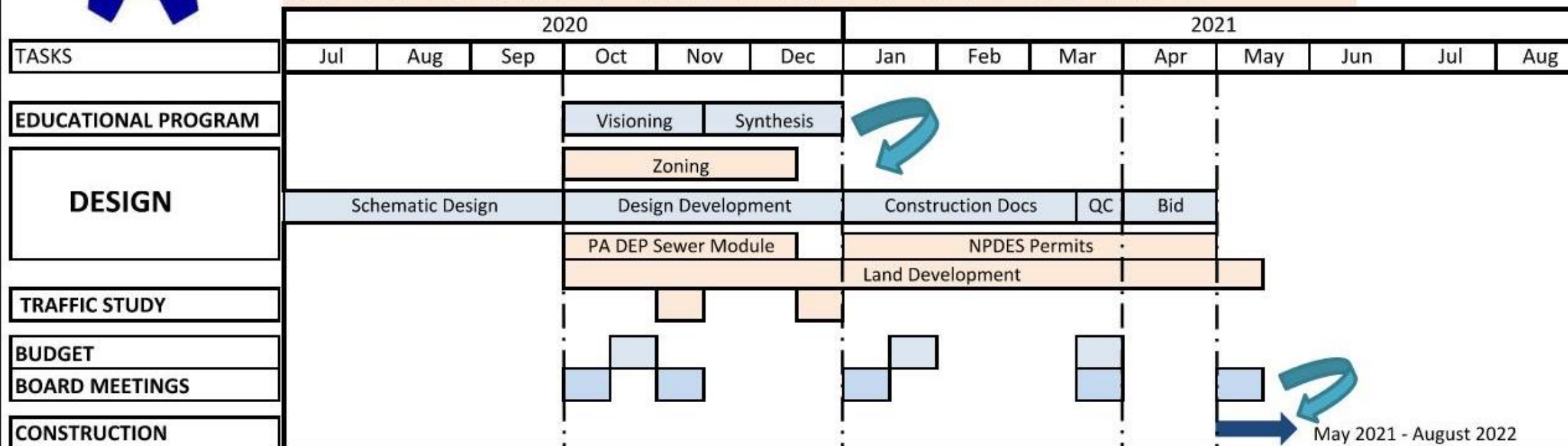




## WYOMISSING AREA SCHOOL DISTRICT

### DESIGN BUILDING RENOVATIONS & ADDITIONS

### REGULATORY REVIEWS & APPROVALS



#### EDUCATIONAL PROGRAM

- Strategy sessions with faculty/staff/stakeholders
- Establish guiding principles and program
- Define physical parameters to support Vision
- Synthesis of input / Collaboration on design

#### DESIGN

- Preliminary designs implementing educational program
- Identifies building / site & organization
- Evaluate traffic and Penn Dot requirements

#### BUDGET

- Discuss scope of work / expectations
- Evaluate building, site and operational costs
- Preliminary costs / Final Board approved budget
- Develop alternates to control budget & flexibility

#### BOARD MEETINGS

- Proper planning to guide decision making
- Coloration with Board / Administration / Community
- Schedule / Budget

- **Begin Design Development phase**
- **Meet with District faculty/administration/stakeholders**
- **Confirm Ed Spec/Program**
- **Provide additional information as requested by the Board**
- **Develop cost estimates/project scope**





Providing a client oriented  
approach to architecture

Questions/Discussions



Crabtree, Rohrbaugh & Associates  
[www.cra-architects.com](http://www.cra-architects.com)